

COMPANY PROFILE

WOLSELEY

Canada



CANADA'S LEADING DISTRIBUTOR OF PRODUCTS AND SOLUTIONS

With 220 branches coast-to-coast and a portfolio of over 175,000 products, Wolseley is uniquely positioned as the most diverse supplier of products and customer solutions in the country.



From industrial pipe and valves for oil sands projects to retail showrooms offering the latest designs for kitchen and bath fixtures and faucets, Wolseley services a wide array of customers.

Wolseley has long-standing relationships with the best suppliers and brands in the business. And, being part of a global organization also presents opportunities to leverage international sourcing strengths and capabilities as well as providing quick access to new and emerging technologies.



One of the key reasons that Wolseley has been able to attract world-class customers and retain them in a competitive business environment is due to the commitment and training of a national team of sales and service specialists. The Wolseley team is known for their knowledge and expertise and customers have come to rely on them for support and solutions.

FAST FACTS

- One of Canada's largest companies with over \$1.2B in sales in the year ending 31 July 2010
- One of the market leaders in key product segments - Plumbing and Waterworks
- Around 220 branches across all 10 provinces
- 175,000+ unique products
- Coast-to-coast over 70,000 customers
- Proud national sponsor of Special Olympics Canada and supporter of Habitat for Humanity

Headquartered:
Burlington ON, Canada

Contact Details:
Wolseley Canada
810 Laurentian Drive
Burlington ON
Canada
L7LN 3V6

T: 905 335 7373
F: 905 331 2640
E: first.last@wolseleyinc.ca
W: www.wolseleyinc.ca





WOLSELEY AT A GLANCE

Wolseley Canada is the Canadian operation of the world's number one heating and plumbing distributor to the professional market, and a leading supplier of building materials and services. Operations span multiple business groups, including residential plumbing and hydronics, commercial mechanical, industrial, HVAC/R (heating, ventilation, air conditioning and refrigeration) and waterworks. Our customer groups include contractors, designers/decorators, institutions, government, municipalities as well as companies in the mining, oil and gas, aerospace, pulp and paper, refining and automotive industries.

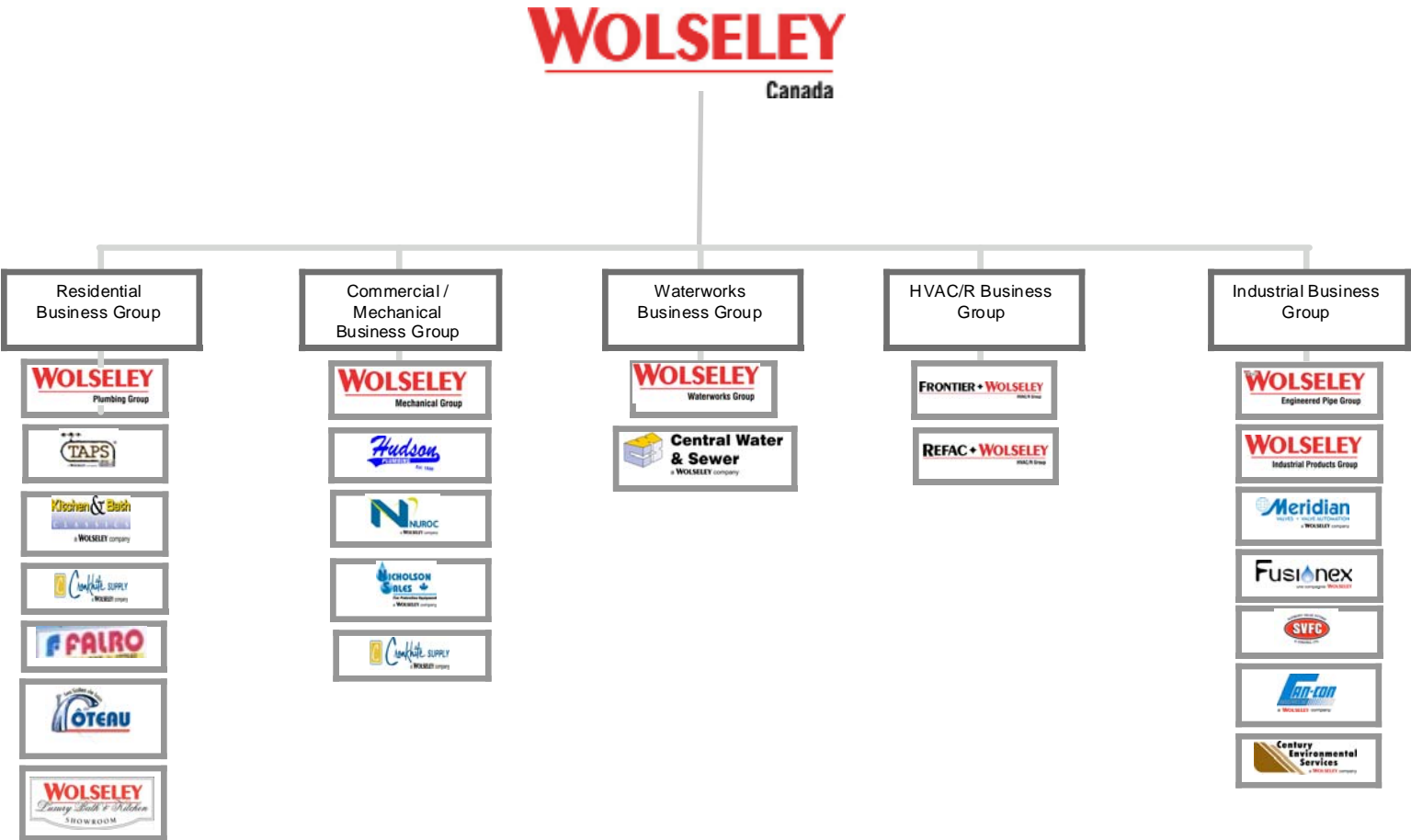
Wolseley Canada is a privately held company whose parent company, Wolseley plc, is based in the UK. Publicly traded on the London Stock Exchange, Wolseley is in the FTSE 100 index of listed companies. The group's strength is to operate strong national businesses in home markets, retain local brand superiority and continually exceed customer expectations through wider product ranges and superior service. Globally the company operates in 25 countries with a total workforce of approximately 47,000 employees.

Wolseley creates enhanced value by leveraging the strengths of our individual businesses, developing our business diversity, and creating innovative solutions to meet our customers' changing needs.



ORGANIZATIONAL STRUCTURE

From industrial pipe and valves for oil sands projects to retail showrooms offering the latest designs for kitchen and bath fixtures and faucets, **Wolseley** is the name Canada builds on.



Contact Details:

Wolseley Canada 880 Laurentian Drive Burlington ON L7N 3V6
T: 905 335 7373 F: 905 331 2640 W: www.wolseleyinc.ca

WOLSELEY CANADA BUSINESS GROUP PROFILES

Residential

Key Products: Fixtures, Faucets, Acrylics, Bathroom Furniture, Pipes, Valves, Fittings, Boilers & Controls, Pumps & Water Treatment

Customer Groups: Plumbing contractors, hydronic heating contractors, renovators, pump and water treatment, interior designers/decorators, consumers, renovators

HVAC/R

Key Products: Heating, air conditioning and refrigeration solutions, HVAC/R parts and products

Customer Groups: Residential and commercial HVAC contractors / dealers, licensed refrigeration contractors, and renovation contractors

Commercial Mechanical

Key Products: Fixtures, Faucets, Acrylics, Bathroom Furniture, Pipes, Valves, Fittings, Boilers & Controls, Pumps & Water Treatment

Customer Groups: Plumbing contractors, hydronic heating contractors, renovators, property manager/apartment owners

Waterworks

Key Products: Mueller Fire Hydrants, Gate Valves, IpeX – PVC Pipe, Royal PVC Pipe, Robar Couplings, Ford Brass, Fernco Couplings, Cambridge Brass

Customer Groups: Municipalities, industrial accounts, large and small contractors

Industrial - EPG

Key Products: HDPE pipes and fittings, pre-insulated pipe and fittings, fusion equipment, fabrication, packaged water and waste water treatment equipment, geosynthetics and geomembrane supply and install

Customer Groups: Mining, oil and gas companies, water and sewer contractors, First Nations, mechanical contractors, other Wolseley business units

Industrial - IPG

Key Products: Fasteners, cutting tools and abrasives, tools, metal working, health and safety products, other general MRO supplies, and services in VMI, vending and crib management

Customer Groups: Aerospace, refineries, pulp and paper, automotive, utilities, pharmaceuticals, manufacturers, mining, mechanical contractors, and machine shops

Industrial - Meridian

Key Products: Gates, pipe and fittings, globes and check valves - cast steel, forged steel products, actuation and automation, ball valves, high pressure steam applications, specialty process products

Customer Groups: Conventional and non-conventional oil and gas, mining, refining, pulp and paper, petrochemical, institutional/government

Wolseley Canada Locations

